

MBA(Tech.)

SYNERGIZING TO EXCEL

**PLACEMENT REPORT
BATCH-2016**

The Placements Team at MBA (Tech.), MPSTME takes immense pleasure to announce the Successful Placements season for the 2016 Batch.

The team would like to sincerely acknowledge the effort and contribution of every individual who has paved the way in raising the stature of MBA(Tech.), MPSTME and provided valuable support to the students throughout the recruitment season.

We extend our gratitude to our regular recruiters who continued their strong relationship and the new recruiters who placed their trust in our students by offering them a gamut of new and niche roles across a number of verticals.

The team would like to convey its heartfelt thanks to the strong alumni base of the institute for their incessant support and assistance.

Finally we would like to appreciate the cooperation extended by the students during the course of the placement season.

We hope to build even stronger relationships with our recruiters and hope to continue catering to the needs of the industry.

MBA (Tech.) Placement Cell is a student driven activity supported by the Placement team. It not only facilitates smooth working of the placement activities in the campus but also works to facilitate the training activities of the students and makes sure they get placed in the best of companies.

OBJECTIVES

The key responsibilities of the Placement Cell are listed below:

- To organize campus interviews for final year students with industries and business houses of repute from all over India.
- To prepare students to face campus interviews by arranging training in Aptitude tests, group discussions, preparing for Technical and HR interviews through professional trainers and MBA (Tech.) alumni.
- To promote career counselling by organizing guidance lectures by senior corporate personnel and by the immediately placed senior students.



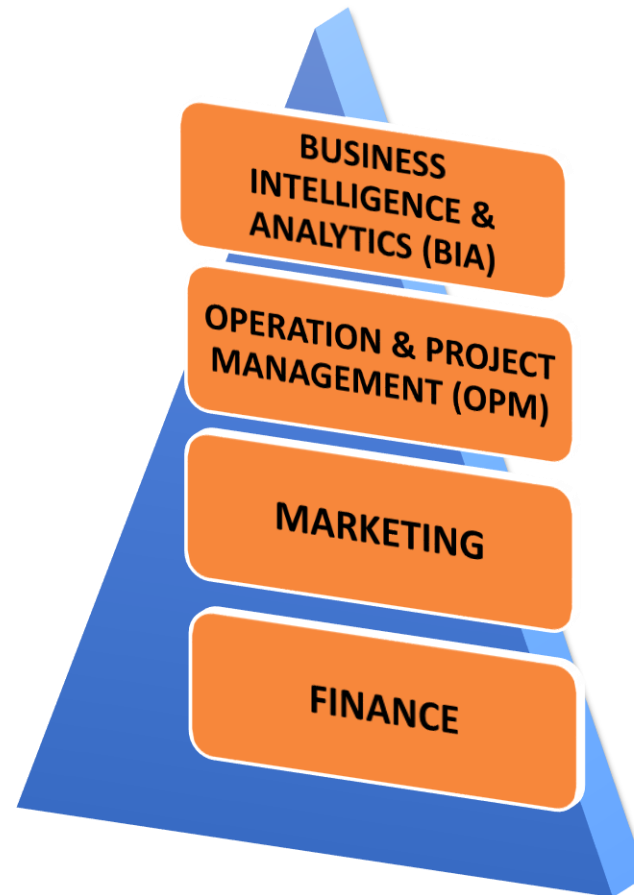
335 Students



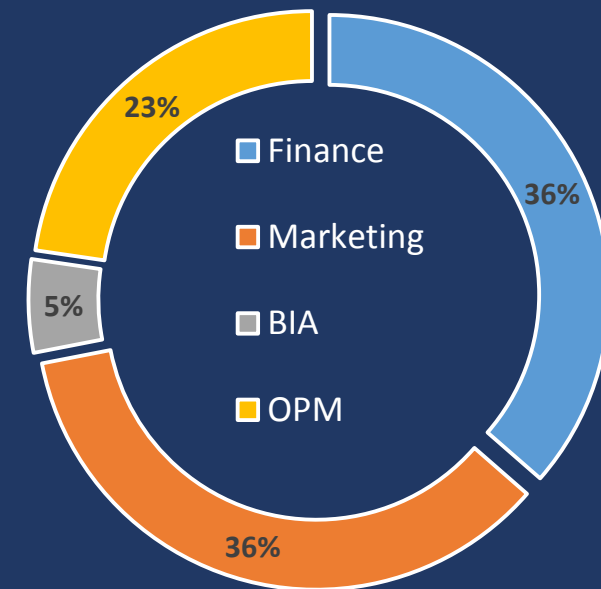
Male-Female Ratio
78:22



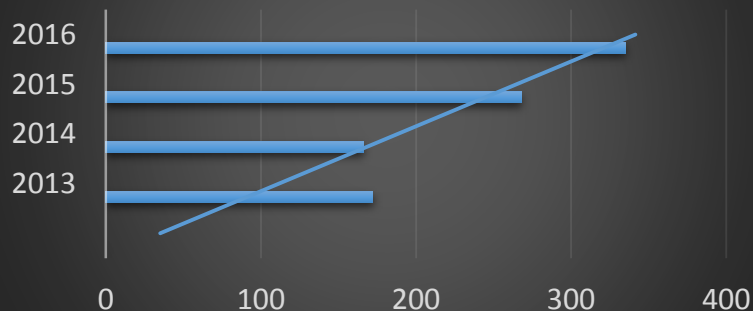
MANAGEMENT SPECIALISATION



BATCH COMPOSITION (BY SPECIALISATION)

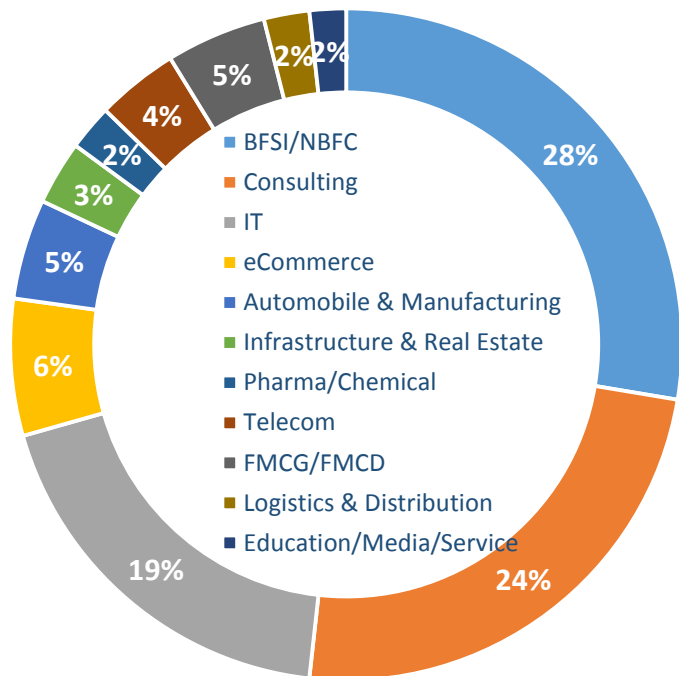


BATCH SIZE

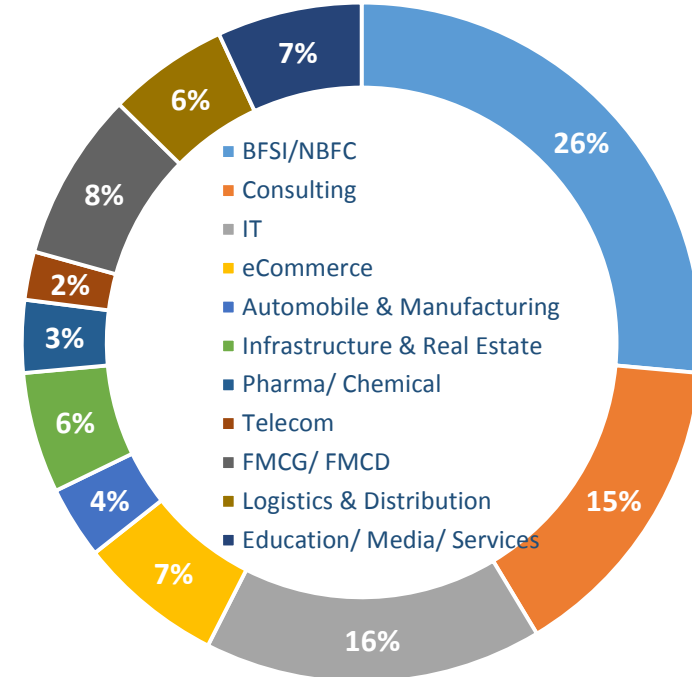


PLACEMENTS - 2016

STUDENT WISE



SECTOR WISE



HIGHEST SALARY (LPA)



FINAL PLACEMENT PROFILES-2016 (BY SPECIALISATION)



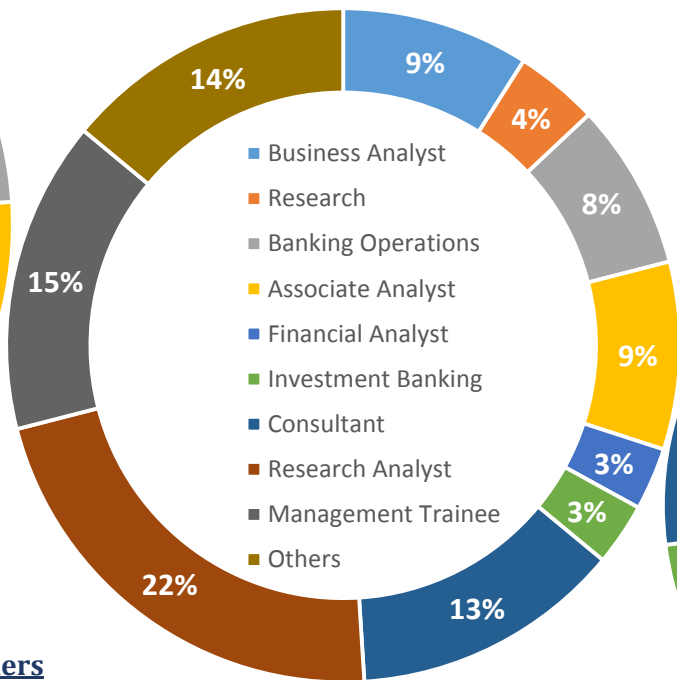
MARKETING



Others

- Product Management
- Sales Trainee
- Pre-Sales Consulting
- Project Management
- Research Analyst

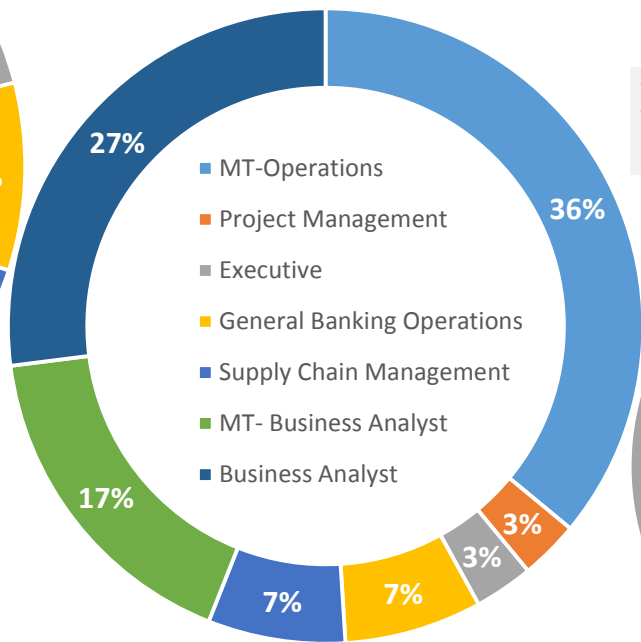
FINANCE



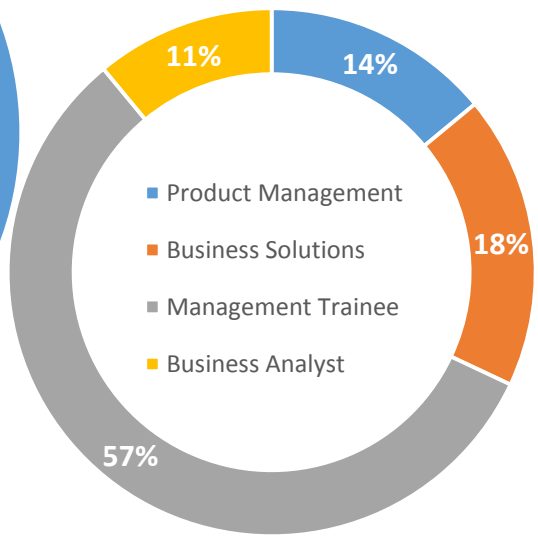
Others

- Vendor Management
- Executive
- Personal Banking
- Digital Marketing
- Program Management
- Risk Management
- Broking & Distribution
- Wealth Management

OPERATION & PROJECT MANAGEMENT



BUSINESS INTELLIGENCE & ANALYTICS



EMINENT RECRUITERS (FINAL PLACEMENTS)-2016



MUKESH PATEL SCHOOL OF
TECHNOLOGY MANAGEMENT
& ENGINEERING

BFSI/NBFC

Artha Venture Partners	CMIE	ICICI Bank	National Stock Exchange
Aum Capital	Dun & Bradstreet	ICICI Securities Ltd.	OSTC
Barclays	Futures First	IndusInd Bank	Siemens
Capital First	HDFC Bank	Karvy Stock Broking	SS&C GlobeOp
Credit Suisse	HDFC Ltd	Kotak Mahindra Bank	Tata AIG
Centrum	HFEC	MB Capital	YES Bank
		MOFSL	

CONSULTING

Aranca	Ernst & Young	PwC	Transven Lifestyle
Coldwell Banker	Factset	S&P Capital IQ	Tutel minds Technoconsultants
CRISIL	FIS Global	Servify	WebXpress
DelphianLogic	Happydemic	Thomson Reuters	

AUTO/MANUFACTURING/PHARMA/CHEMICAL

Abbott	BASF	Galaxy Surfactants
Alfa Carpeting	Celite Group	Lupin Ltd
Atul Ltd	Exide Industries	Mahindra Rise

IT/ ITES

CMS Infosystems	Doodleblue	IBEXI Solutions	Odessa Technologies
Covacsis	ETP International	Ingram Micro	TATA Elxsi
Dell	Fujitsu	L&T Infotech	ThinkAnalytics
DeSTAR Infotech	Gateway Technolabs	Majesco	WNS Global
Dimension Data	Hewlett-Packard	netCORE	Zycus

FMCG/FMCD/ INFRA/REAL ESTATE

Berger Paints	Glass Wall Systems	Kansai Nerolac Paints Ltd.	Puraniks Group
Colliers International	ITC Ltd.	LG	Shoppers Stop
Decathlon	Knight Frank	PERI	Trafigura

E-COMMERCE/ MEDIA/EDUCATION/ SERVICES

99Acres	Jaro Education	Musafir	Super
Bizongo	Justdial	Naukri.com	TechProcess
CarDekho	LeadSquared	Network 18	Wooplr
Citrus Pay	Madison	Nielsen	Zomato

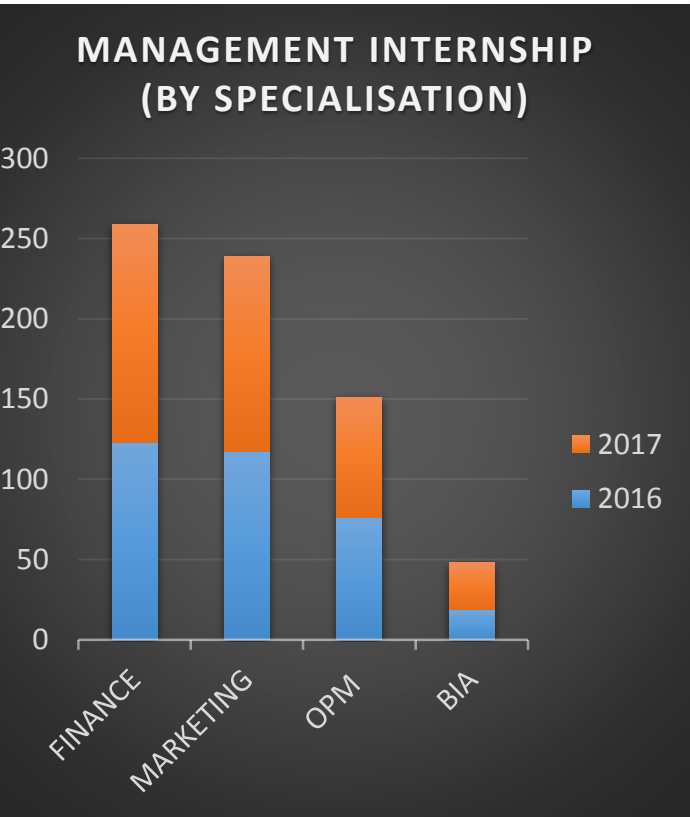
LOGISTICS/ TELECOM

Allcargo Logistics	Idea	Rhenus Logistics,
Aramex	Mahindra Logistics	Reliance Jio

SUMMER PLACEMENTS-2016

FMCG/ FMCD/ TELECOM

GE, Godrej & Boyce Mfg Co. Ltd., Reliance Jio, Welspun India Ltd



BFSI/NBFC

Apollo Finvest, Aristotle, Artha Venture Partners, Bank of India, Dun & Bradstreet, I-Can Financial Services, Motilal Oswal, NABARD, Nomura, Philip Capital, Punjab National Bank, Reserve Bank of India, Siemens, Tuscan Ventures Pvt. Ltd., Vistaar Financial Services, UCO Bank

CONSULTING

Drona Aviation, Ernst & Young, Evaluenz, Justdial, Patronus Creative, Thomson Reuters, Transven Lifestyle, Tutelminds Technoconsultants

e-COMMERCE/ SERVICES

Bizongo, CredR, Happay, Health Orange, Hi2Buy, Itransparity, Lendbox, MassBlurb, M-Taxi, Razorpay, Sqwik, Tube Mobility, Wera Food Technology, Wooplr

Education & Media

Achievers Zone, Machadalo, ShethPublishing House, SkillStreet

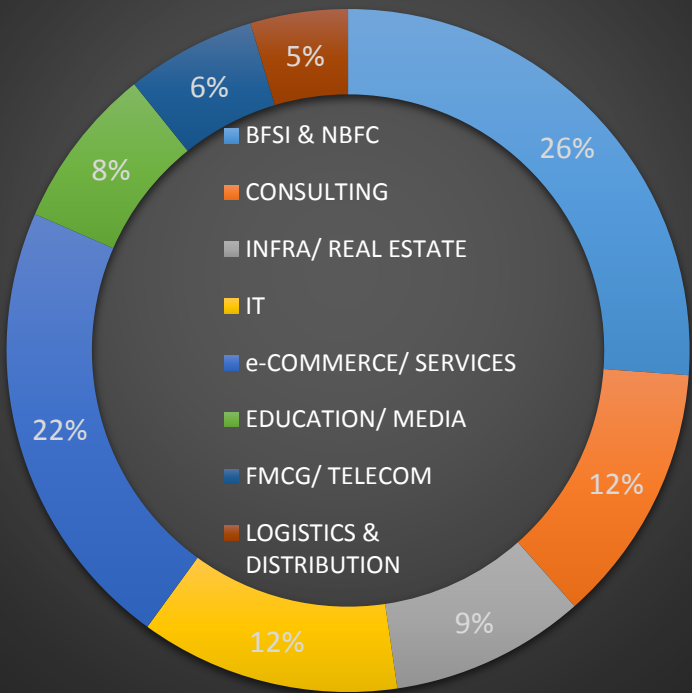
IT

B2X, Destar Technologies, Dimension Data, Entrust Datacard, IdeaForge, Odessa Technologies, Tick Softwares, Zycus

LOGISTICS & DISTRIBUTION

LoadDial, Mahindra Logistics, Silver Hill

MANAGEMENT INTERNSHIP (SECTOR WISE)



INFRASTRUCTURE/ REAL ESTATE

Eaton Corporation, JLL, Liasas Fores, PGD Group Raje Structural Consultants, Vilasrao Deshmukh Group of Companies

DEAN'S MESSAGE



MUKESH PATEL SCHOOL OF
TECHNOLOGY MANAGEMENT
& ENGINEERING

MBA(Tech.) Placement is a reflection of all our inputs that includes-Curriculum, Internships & Industry-Academia Partnership as well as students efforts in preparing themselves for a Professional Career.

The feedback from our Eminent Recruiters has been Encouraging.

We thank our Esteemed Corporate Recruiters, Dean, Associate Dean, Chairperson Technology Management, Faculty Members, Placement Committee Members & Administrative Staff without whose help this wouldn't have been possible.

Dr. Sharad Mhaiskar
(Dean, MPSTME)

For any queries:

Please write to mbatechplacements@nmims.edu or VISIT <http://engineering.nmims.edu/students/placements/mba-tech/>

MBA (Tech.) Placements Cell, Mukesh Patel School of Technology Management & Engineering, Mumbai, Maharashtra 400056, India